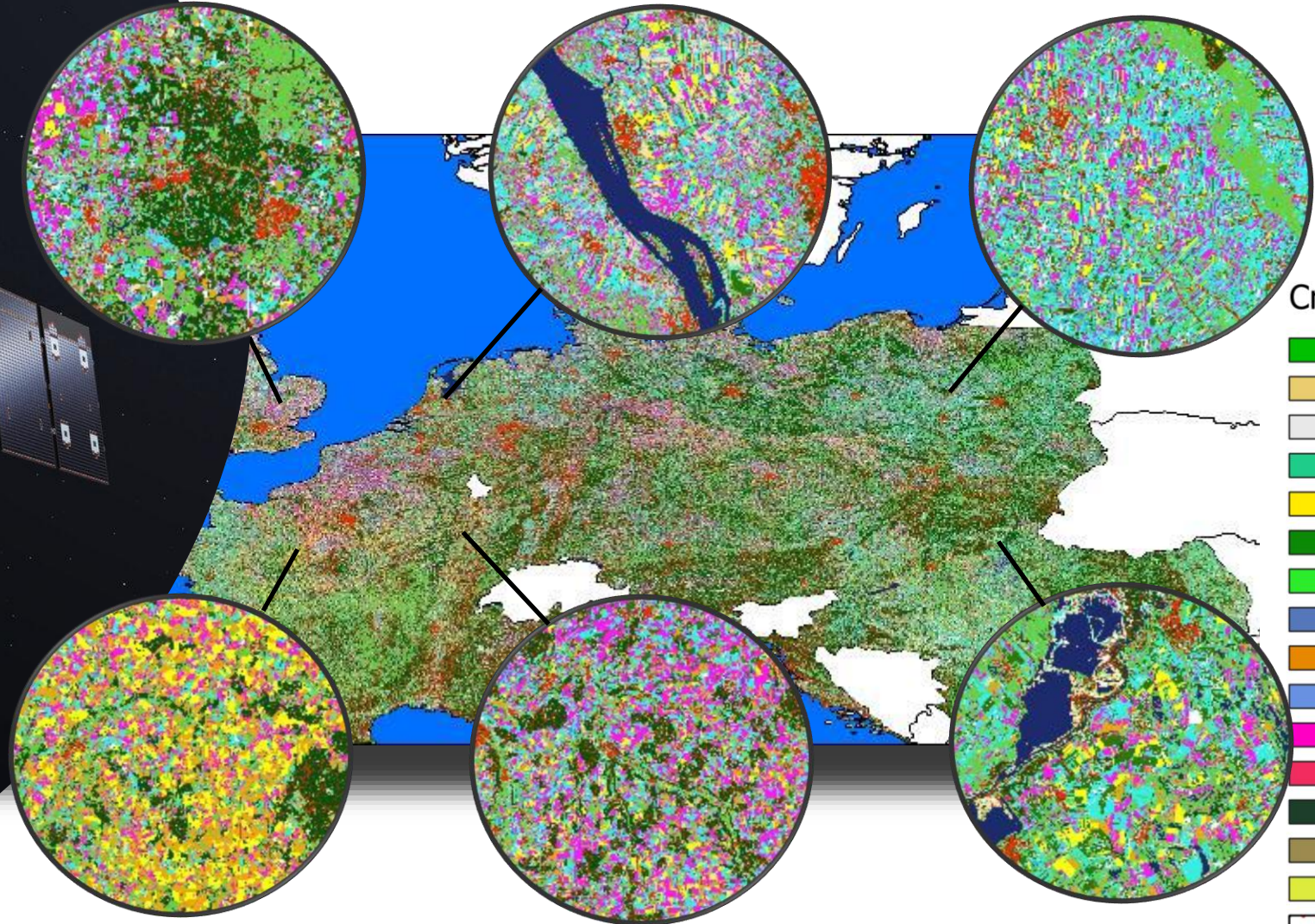
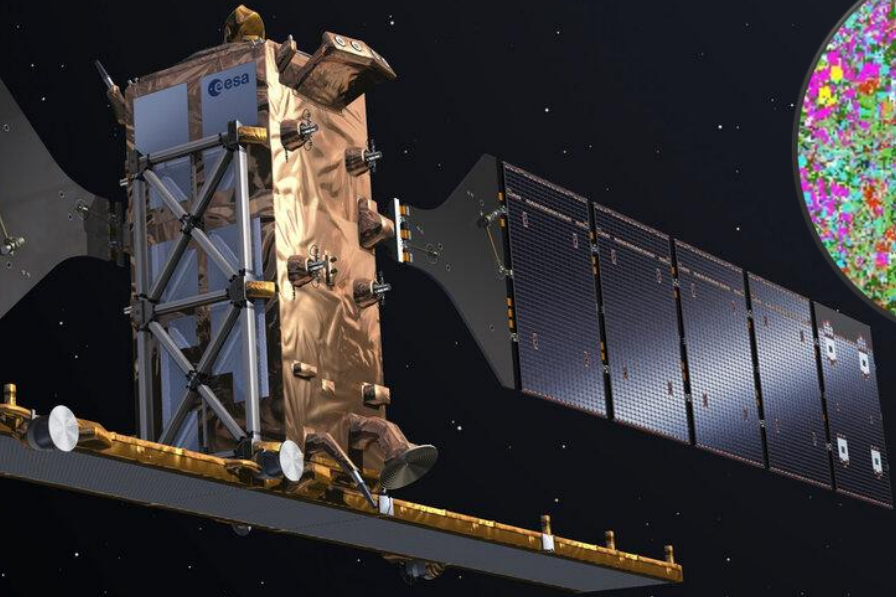


CORA_mAPS

Crop type mapping

CORA_{MAPS}



Crop classes

- Grassland
- Peas
- Potato
- Maize
- Rapeseed
- Sugar beet
- Soybeans
- Winter triticale
- Winter barley
- Winter rye
- Winter wheat
- Summer grain
- Broad beans
- Other agriculture
- Sunflower
- Special crops

CORAmaps

Crop type mapping

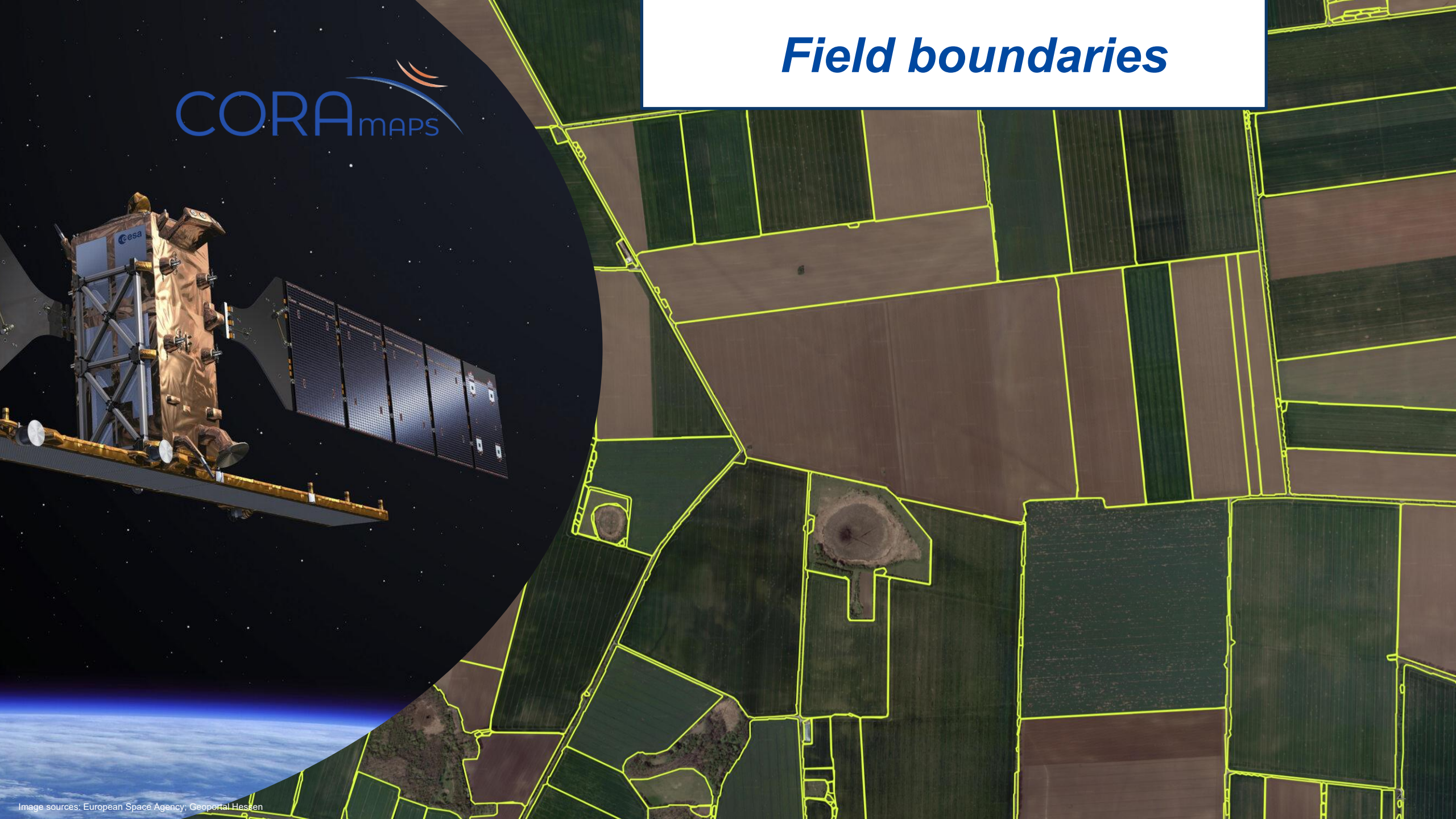


Crop classes

- Grassland
- Peas
- Potato
- Maize
- Rapeseed
- Sugar beet
- Soybeans
- Winter triticale
- Winter barley
- Winter rye
- Winter wheat
- Summer grain
- Broad beans
- Other agriculture
- Sunflower
- Special crops

Field boundaries

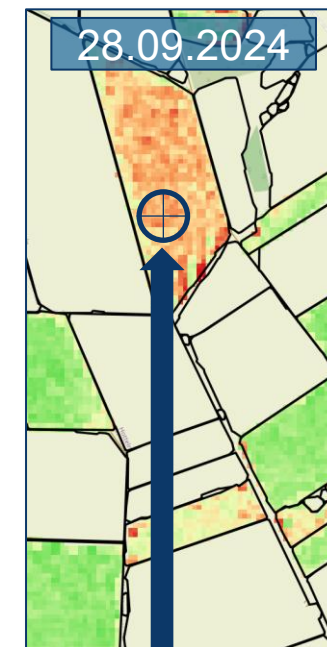
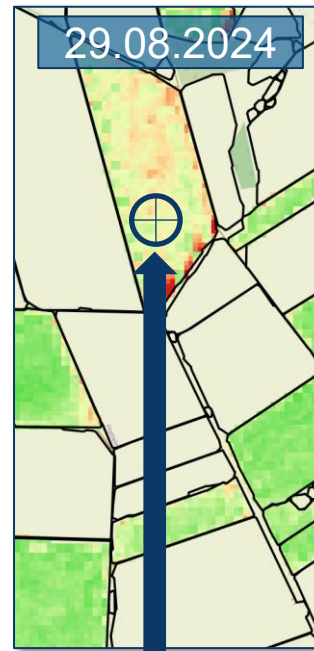
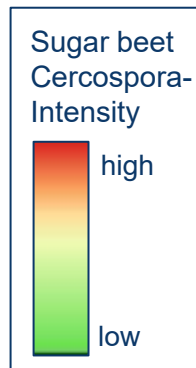
CORA_{MAPS}



CORA_{MAPS}



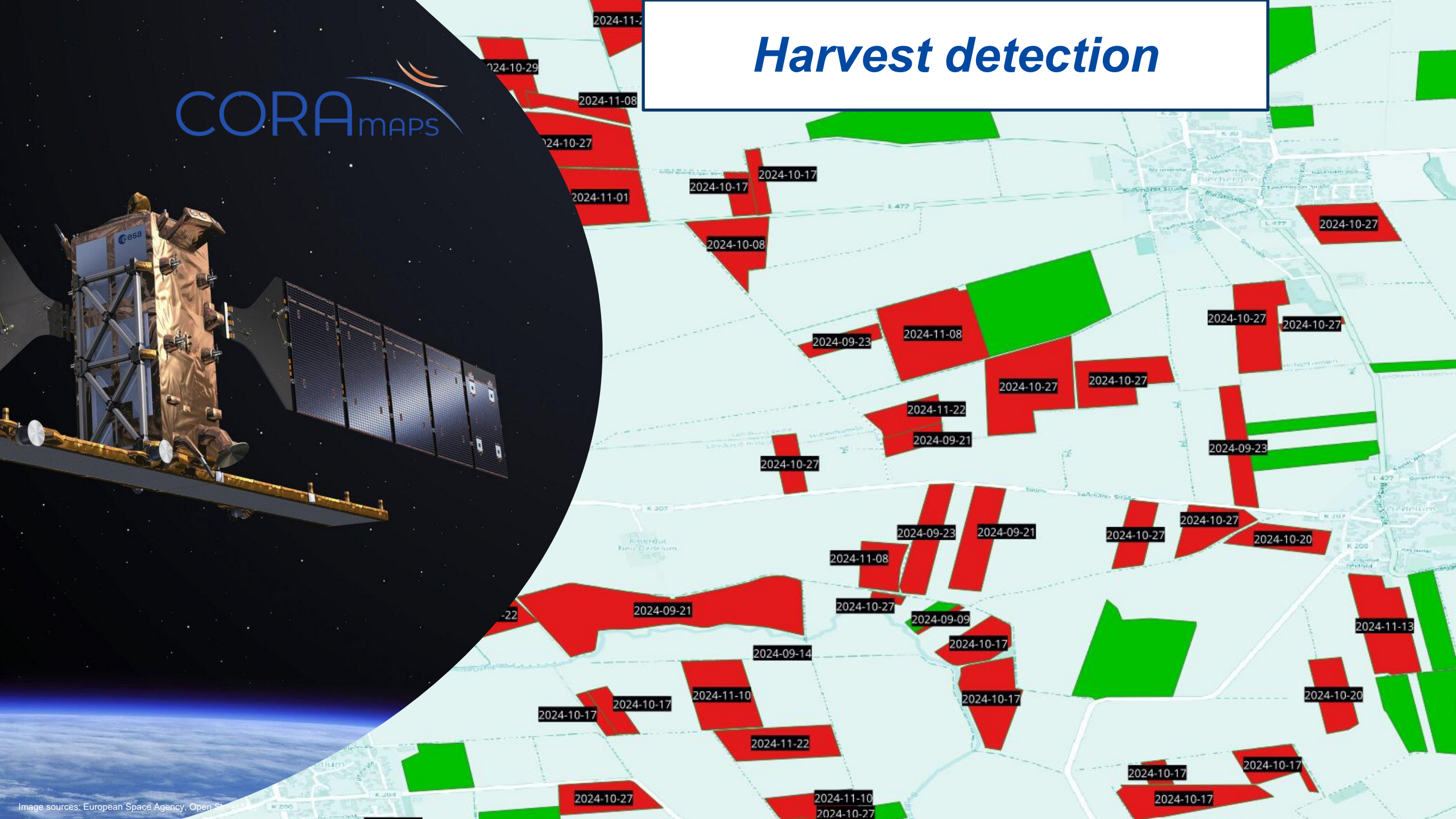
Automated Detection of plant diseases



CORAmaps

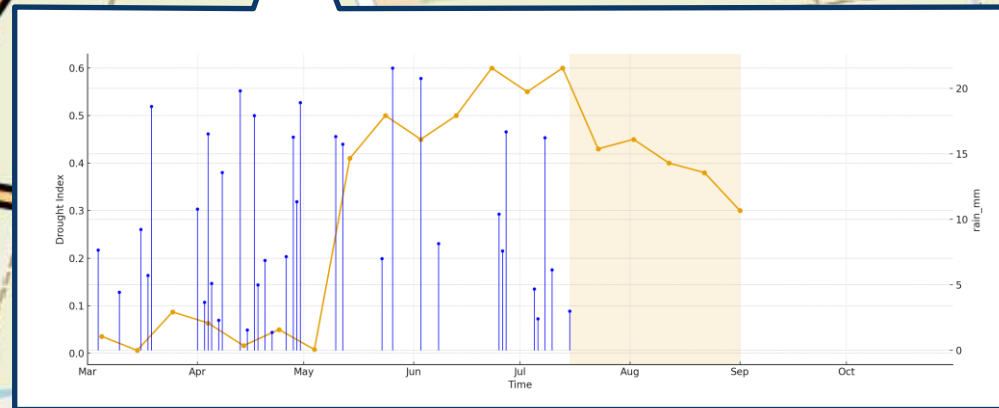
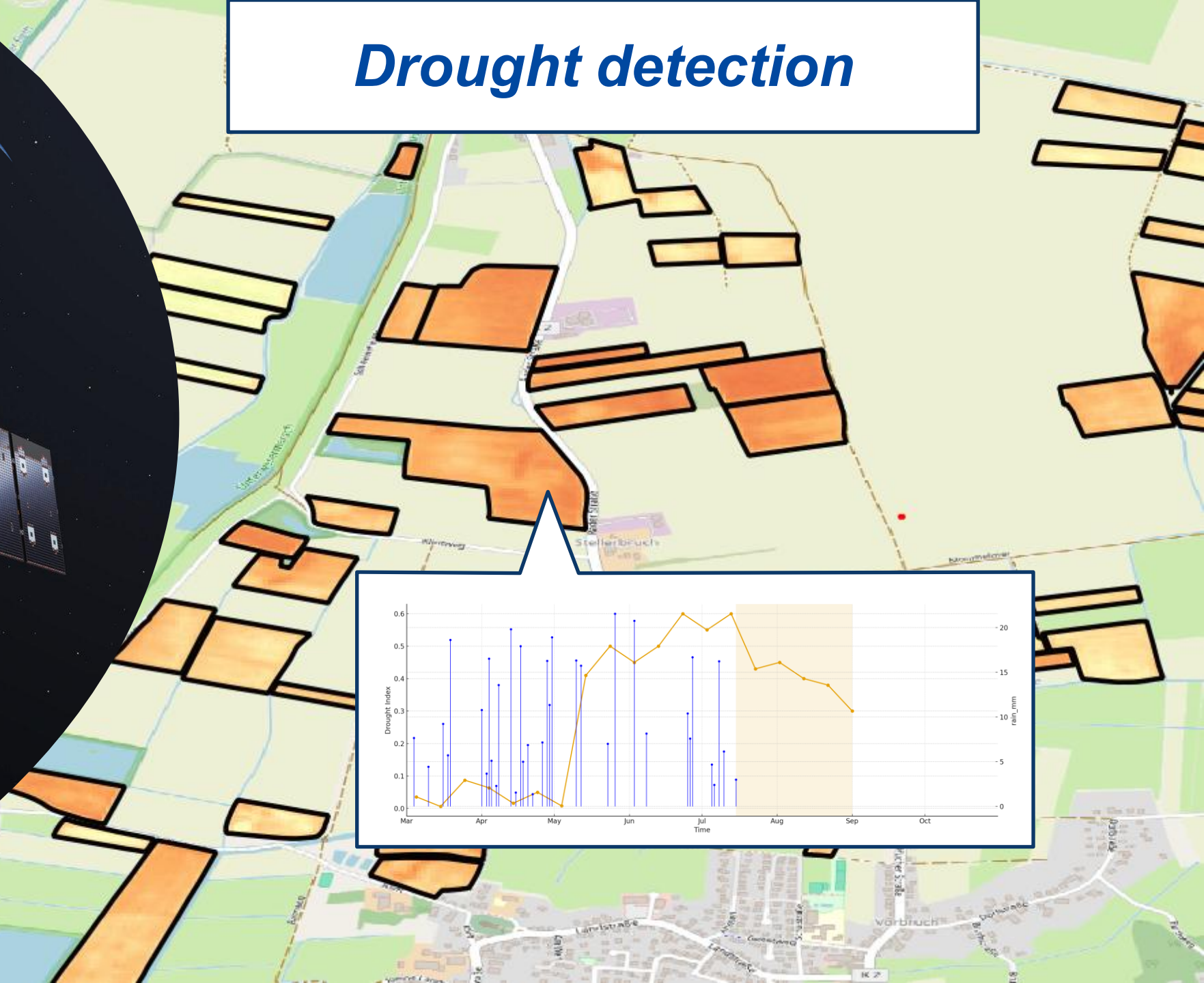


Harvest detection



CORA_{MAPS}

Drought detection





CORA_{MAPS}

Permanent Grassland & Mowing detection



Map legend


-  Permanent grassland
-  Mowing detected (01/07/2025)

Catch Crop detection

CORA_{MAPS}



Map legend

 Catch Crops

The image features a satellite in orbit above Earth. The satellite is a rectangular structure with a central gold-colored section and several dark solar panels extending from one side. The Earth's blue and white atmosphere is visible in the background. In the top left corner, the logo for CORAmaps is displayed, consisting of the word "CORA" in blue and "maps" in a smaller, lighter blue font, with a stylized orange and blue arc above it.

CORAmaps

Geodata and AI

- AI built in-house
- Full pipeline expertise
- Geodata processing experts
- From raw to usable geodata
- Custom-made solutions